

ESTELLA'S PERSONALITY DEVELOPMENT REFLECTED IN MOVIE 'CRUELLA' (2021) A PSYCHOANALYTIC PERSPECTIVE

Evy Puspitosari; Titis Setyabudi

Program studi Pendidikan Bahasa Inggris, Fakultas Keguruan dan Ilmu
Pendidikan, Universitas Muhammadiyah Surakarta

Abstrak

Studi ini berfokus dalam topik menganalisa perkembangan kepribadian dari Estella di dalam film *Cruella* yang dirilis pada tahun 2021 oleh Craig Gillespie. Penelitian ini menggunakan teori psikoanalisis oleh Sigmund Freud. Metode yang digunakan dalam penelitian ini merupakan metode deskriptif kualitatif. Penelitian ini menggunakan sumber data primer dan sekunder, sumber data primer didapat dari film *Cruella*, sementara data sekunder didapat dari artikel, buku ilmiah, dan beberapa jurnal yang berkaitan dengan topik. Tujuan dari penelitian ini adalah untuk mengetahui struktur kepribadian dari Estella dan bagaimana perkembangan kepribadiannya di dalam film. Hasil dari penelitian yang di dapat ialah ketidakseimbangan struktur kepribadian, pengaruh lingkungan, pengaruh dari karakter lain di dalam film ini.

Kata Kunci: Estella, Cruella, psikoanalisis, perkembangan kepribadian.

Abstract

This study focuses on the topic of analyzing Estella's personality development in the film *Cruella* released in 2021 by Craig Gillespie. This study uses the psychoanalytic theory by Sigmund Freud. The method used in this study is a qualitative descriptive method. This study uses primary and secondary data sources; primary data sources are obtained from the film *Cruella*, while secondary data are obtained from articles, scientific books, and several journals related to the topic. The purpose of this study is to determine Estella's personality structure and how her personality develops in the film. The results of the study obtained are the imbalance of personality structure, environmental influences, and the influence of other characters in this film.

Keywords: Estella, Cruella, psychoanalytic, personal development

1. INTRODUCTION

Every human being has goals and ambitions. Humans need the help of other people to achieve a goal because humans are social beings. Occasionally, some jobs need help and require other people to face problems together, even though some of them can. Sometimes, the presence of other humans can also influence a person's personality and ambition to act. Social psychology explains how a person's thoughts, feelings, and behavior are influenced by the imaged, actual, and implied of other human being (Susan, 2018: 3).

Personality is how a person expresses themselves, including attitudes, opinions, moods, thinking, behavior, and feelings, when interacting with other people. It includes behavioral

characteristics, both inherent and acquired, that distinguish one person from another and it can be observed in people's relations to the environment and to the social group (Encyclopedia Britannica). Characters are an intrinsic element, and they become part of the course of a story. Moreover, each character certainly has a personality that differentiates one from another and makes the story more interesting, just like people in the real world. Sigmund Freud developed the first comprehensive theory of personality, and his theory remained the most detailed and original theory ever formulated in nearly a century. (Bootzin, 1986: 454). In 1923, Freud introduced another structural model without replacing the old structural. The three structural are the Id, Ego, Superego. Id is the human subconscious. Freud (1915) explained that the main source of human behaviour is the unconscious mind. Hall (1954) Id is more closely related to the body than to the external world. The ego personality is governed by the reality principle; it tries to replace the pleasure principle of the Id (Feist, 1985:25). The secondary principle carries out the reality principle but does not abandon the pleasure principle. The Superego operates on the principle of morality and motivates us to behave in a responsible and socially acceptable manner. The Superego is a personality system that develops during childhood and is responsible for ensuring that moral standards are adhered to.

Cruella was directed by Craig Gillespie, it is an American crime-thriller comedy movie. Walt Disney Pictures released this film on May 18, 2021, in Los Angeles, United States. The duration of the film is 134 minutes. *Cruella* is a spin-off movie from *One Hundred and One Dalmatians*. The main character in this movie is Emma Stone as Estella Miller and Cruella de Vil.

There were previous studies that the writer used in this study. The first previous study is a journal by Nurul, Nirwan, and Retno (2022). *The Exploration of Estella's Fashion Style, Ways of Speaking, and Her Double Personality in Disney Films, Cruella*. The result of the research revealed two personalities: Estella was the good one, and Cruella was the troublemaker. The differences in personality can be seen in their clothes, their way of speaking, and how they interact with other characters.

The second study is written by Anita Siregar (2022). *The Concept of Revenge and Ambition of Main Character in Movie Script "Cruella" by Craig Gillespie Term Paper*. The research focused on the theme of the film script and used an intrinsic approach with the concepts of characterization, setting, and plot, while the extrinsic approach dealt with the theory of revenge by Matanggaran and ambition by Tatenhove. The results of this study indicate that the main character in *Cruella*, Estella, has a vengeful and ambitious motivation in her life.

The next study is from Beliana Anjani (2022). *Revenge and Its Impact on Personality in Gillespie's Cruella (2021): a Psychological Perspective*. The purpose of this study is to analyze the psychological conditions in taking revenge on the main character. The results found that there were four reasons for Cruella's revenge, namely feeling lost, character transformation, creating competition, and manipulation of the situation. There were four factors that indicate revenge in the Cruella film, namely characteristics, plot, setting, and style.

The fourth previous study from Wismahardiani & Widiyanto (2022). *Moral Values Found in Cruella Movie*. The aim of this study was to find out the moral values in the movie. The result of the research found two different classifications. First, capability and peace, potential and self-confident, kindness, honest. Second, justice, affection, love, kindness. The most prevalent moral value in the movie are love and affection.

The fifth is a journal written by Yustina Fritriani (2019). *Analysis of Psychological Aspects of the Main Character in the Movie "Joker" based on Sigmund Freud's Theory*. The purpose of this study is to analyze Joker, the main character in the movie "Joker". The result revealed that the id in the Joker character was negative thoughts about injustice in human life based on past experiences. The ego in the Joker was that he decided to kill the wrong person. The superego in The Joker was to let good people alive.

The next study is a journal written by Vishal K.R (2024). *Unscrambling the Friendship Code: A Psychoanalytic Exploration of the Bollywood Film: "Dor"*. The aim of this research was to analyze the film and characters using Freud's psychoanalytic theory. The researcher revealed that Zeenat's personality structure changed which were originally controlled by the Id into the Ego taking control, it influenced by Imam and Behrupiya. Meanwhile, the personality structure of Meera's character was often controlled by the Superego.

The seventh previous study written by Ismet Toksoz. (2017). The aim of this study was to analyze personlaity stucture of two characters in the film, Vladimir adn Estragon and also Mr. Godot as the hidden Character. The result revealed that Vladimir as 'Ego', Estragon as 'Id' and the hidden character Mr. Godot as 'Superego'.

The eighth previous study from Tia Pratiwi, Sarwiji Suwandi, Nugraheni Eko Wardhani. (2019). *Psychoanalysis Ego Image by Freudian: Study of Psychology in the Main Character of the Tale Hang Tuah*. The aim of this study was to analyze personality of the main character. The result of this study revealed that personality structure of Hang Tuah was most controlled by 'Ego' based on Freud's theory.

The next previous study was written by Aryanti and Agnes Widyaningrum. (2023). *Psychoanalysis of Ellie Chu Potrayed from Freud's and Maslow's Theories in "The Half of*

It” Movie. The purpose of this study is to analyze the psychology of the main character Ellie Chu used the psychological theory by Sigmund Freud and Abraham Maslow. Result of this study were a deeper understanding of her actions, decisions, and emotional journey.

The tenth Previous Study was written by Selvi & Baskaran. (2016). *Sigmund Freud’s Psychoanalytic Theory of Id, Ego, and Superego: A Critical Study of Director Shankar’s Movie, Anniyan*. The aim of the study is to analyze the facts contained in the characterization of Anniyan, and Remo from the film Anniyan critically and in depth using Sigmund Freud’s psychoanalytic theory. The result revealed that the cahraction of Anniyan representing ‘Id’ and Remo representing of ‘Ego’.

“*Psychoanalysis of Main Character’s Personality in the Movie Moana*” is the last previous study. The research was conducted by Izzah Afkarina & Dwi Taurina Mila (2019). The purpose of this study was to find factors that influence the development of the personality of Moana. The results of this study contain 11 data, including structural personality and several factors that influence the development of Moana’s personality: hereditary factors, physical environment, cultural environment, family environment, and social roles of the environment.

There are similarities and differences in the articles above. Eight use the same perspective but with different primary data, while the others use the same primary data source with different theories. The previous study explains the duality of Estella's character and her revenge ambition. Researchers focused on defining the personality structure of Estella using a psychoanalytic approach and how the personality development of the main character in the Cruella movie.

2. METHOD

In this study, the writer uses descriptive qualitative research. Qualitative research is a research method that focuses on observation and provides in-depth insights. In qualitative research, data can be obtained through interviews, observations, document analysis and then summarizing the findings through verbal or narrative methods.

3. RESULTS AND DISCUSSION

This chapter dicuss about findings and discussion in the study of psychoanalytic perspective in movie *Cruella*.

3.1 Structure of Personality

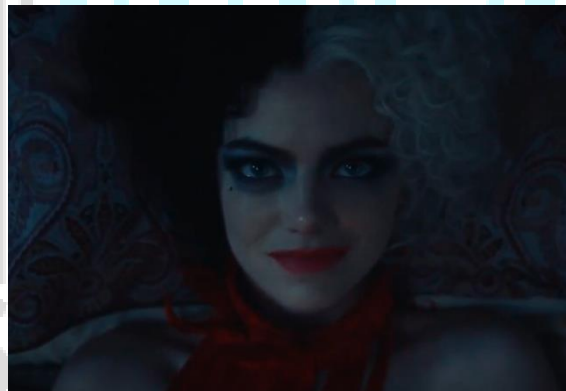
Based on Sigmund Freud's theory there are

3.1.1 Id

The Id is the only component of personality that is present from birth. According to Freud, the Id is the source of all psychic energy, so it is the main component of personality. This aspect of personality is completely unconscious and includes instinctive and primitive behaviour.



pictures 1. Estella's Id being rebellious.



pictures 2. Estella decided to take revenge

[Cruella monologue]

They say there are five stages of grief.

Denial, anger, bargaining, depression, and acceptance.

Well, I'd like to add one more.

Revenge.

Estella is so desperate for revenge against the Baroness for the death of her mother, Catherine. She ends up ruin the Baroness' fashion show party. She changed her character to Cruella in her actions she remains Estella's cahracter when she works. She even asked Jasper and Horace to kidnap The Baroness's Dalmatians and commits several actions that destroy the Baroness' career through her extraordinary fashion skills as a form of revenge.

3.1.2 Ego

The ego is a component of personality that is responsible for facing reality. The ego itself functions in the conscious, preconscious and subconscious mind. According to Freud, the ego develops from the id and ensures that the impulses derived from the id can be expressed in a way that is acceptable in the real world. Estella is shocked when she finds out another fact that the Baroness is her biological mother, someone who killed Catherine, whom she thought was her mother. This incident causes her ego to emerge.



pictures 3. Jasper was talking with Estella.

JAPER: "I know you're in pain."

ESTELLA: "Mmm."

JAPER: "And I know that she caused it, but, you know, killing her is not gonna make that go away."

ESTELLA: "I won't. I promise."

JASPER: "All right, cool. Groovy."

ESTELLA: "Unless I really, really have to."

Estella thought about killing the Baroness as her final revenge, but her ego led her to do it another way, a better way. This can be seen from how Estella's ego is portrayed when she decided not to kill the Baroness to avenge her but rather to reveal the Baroness' cruelty and imprison her.

3.1.3 Superego

The superego includes society's values and morals, which are learned from parents and other people. The superego develops during childhood and is responsible for ensuring moral standards are adhered to. The superego operates on the principle of morality and motivates us to behave in a responsible and socially acceptable manner.



pictures 4. Estella's trying to be a better person

Estella was indeed guilty, but she decided to forget it and start a new life. This can be seen from the way she dyed his hair red.

The peak of Estella's superego can be seen at the end of the film. She begins to realize that she is not the same as her biological mother, and she also does not have to adjust to society's standards. She realises it completely and finally finds her ideal self as Cruella.

3.2 Estella's Character Development

Estella was born different from the others; she had an abnormality in her hair colour, which is called piebaldism. Catherine always taught Estella moral values so that she could be accepted in society.



Pictures 5. Catherine gave positive affirmation

CATHERINE: "Remember, you belong here as much as anyone. They're lucky to have you."

ESTELLA: "Agreed."

CATHERINE: "Well, be polite. And good. And friendly."



Pictures 6. Jasper and Horace gave Estella a gift

Estella is still a positive person, and the moral values taught by Catherine are still attached. Although her rebellious attitude is still there, she is still the friendly, kind, and cheerful Estella. She knows how to say thank you to Jasper and Horace when she gets a job at Liberty of London and The House of Baroness.



Pictures 7. Baroness gave negative influence to Estella

Her encounter with the Baroness makes her a crueller person and more ambitious for revenge after learning the fact that the Baroness killed Catherine. Unfortunately, the Baroness gave negative affirmations to Estella and taught Estella to become someone more cruel and want to have a killer soul like the Baroness.



Pictures 8. Estella's Id dominates the whole personality structure

Estella has to sacrifice herself and kill Estella's good, friendly, cheerful character, as well as eliminate the moral values taught by her mother, Catherine. She turns herself into a cruel and ambitious Cruella.

3.3 Discussion

After analyzing the film entitled *Cruella* (2021), the writer found that the structure of personality- the id, ego, and superego- had uninfluenced Estella's personality. Furthermore, Craig Gillespie also described the character of Estella every time she met. Her Id wants Estella to do whatever she wants by creating the character of Cruella, the troublemaker inside her and satisfying her desire for revenge on the Baroness. Her Ego decides not to kill the Baroness and let everyone know the Baroness' true nature and put her in prison by asking for help from her friends. Meanwhile, her Superego wants her to be a better person and stop causing trouble.

After going through a lot of problems in her life, Estella realized that she could not be a good and normal person like her mother, Catherine, wanted. She realized that the personality inside her was Cruella, the troublemaker. Unfortunately, Estella decided to kill the good character of Estella inside her and created the character of Cruella entirely. In other words, the Id inside Estella is dominant over her Ego and Superego.

4. CLOSING

After analyzing the movie Cruella (2021). The research has conclusion. Estella realized that she could not be a good and normal person like her mother, Catherine, wanted. She realized that the personality inside her was Cruella, the troublemaker. Unfortunately, Estella decided to kill the good character of Estella inside her and created the character of Cruella entirely. In other words, the Id inside Estella is more dominant than her Ego and Superego. The impact of the surrounding environment is also very important for the development of a person's personality.

REFERENCES

- Adams, L.S. (2001). *A history of Western art*. Boston: McGraw Hill.
- Ahmad, M. (2017). Religion and Psychoanalysis of Sigmund Freud. *RELIGIA*, 14(2), 145–318. <https://doi.org/10.28918/religia.v14i2.92>
- Ardiati, R. K. (2018). Peran Orang Tua Dalam Perkembangan Kepribadian Anak Usia Dini. *Indonesian Journal of School Counseling*, 3(3),73-79. <http://dx.doi.org/10.23916/08413011>
- Ariyanti, Widyaningrum, A. 2023. *Psychoanalysis of Ellie Chu Portrayed from Freud's and Maslow's Theories in "The Half of It" Movie*. *Elthical Lingua* 10(2). DOI: 10.30605/25409190.593
- Ary, D., Jacobs, L. C., and Sorensen, C. 2010. *Introduction to Research in Education*. 8th edition. Wadsworth: Cengage Learning.
- Bootzin, R. Richard. 1986. *Psychology Journal of the American Society for Physical Research*. New York: North Western University.
- Fiest, G. F.A. (2017). *Teori Kepribadian*. Jakarta Selatan:Salemba Humanika.
- Freud, S. (1915). *The Unconscious*. SE, 14:159-204.
- Freud, S. (1923). *The ego and the id*, SE, 19: 1-66.
- Groot, J. L.-D. (1962). Ego Ideal and Superego. *The Psychoanalytic Study of the Child*, 17(1), 94–106. <https://doi.org/10.1080/00797308.1962.11822840>
- Hall, C.S. (1954). *A Primer of Freudian Psychology*. New York: The New American Library Limited.
- Hoffman, F.J. (1957). *Freudianism and the literary mind*. Lousina: Lousina University Press.
- Hossain, Md. Mahroof. (2017). Psychoanalytic Theory used in English Literature: A Descriptive Study. *Global Journal of Human-Social Science: G*, 17, 43.
- Ilmarinen, V. J. Lonqvist, J. E., and Paunonen, S. (2016). Similarity attraction effects in friendship formation: Honest platoon-mates prefer each other but dishonest do not. *Personality and Individual Differences*, 92, 153. <https://doi.org/10.1016/j.paid.2015.12.040>

- Lancer, D. (2017). Codependency Addiction: Stages of Disease and Recovery. *Global Journal of Addiction & Rehabilitation Medicine*, 2(2).
<https://doi.org/10.19080/gjarm.2017.02.555582>
- LaSalle, Mick. 2021. *Review: Emma Thompson wipes Emma Stone off the screen in misbegotten 'Cruella'*. San Francisco Chronicle.
<https://datebook.sfchronicle.com/movies-tv/review-emma-thompson-wipes-emma-stone-off-the-screen-in-misbegotten-cruella>
 Accessed July, 12. 2022 at 10.00 am
- Matthew B. Mile, A. Michael Huberman, J. S. (2016). *Qualitative Data Analysis* (Vol. 30, Issue 25). <https://doi.org/10.7748/ns.30.25.33.s40>
- McLeod, S. (2016). Id Ego Superego. Retrieved June 14, 2019, from Simply Psychology website: <https://www.simplypsychology.org/psyche.html>
- Moser A, Korstjens I. Series: Practical guidance to qualitative research. Part 1: Introduction. *Eur J Gen Pract*. 2017 Dec;23(1):271-273.
- Pratiwi, T., Suwandi, S., and Wardhani, N. E. (2019). *Psychoanalysis Ego Image by Freudian: Study of Psychology in the Main Character of the tale of Hang Tuah*. Budapest International Research and Critics Institute-Journal 2(3).
- Rotten Tomatoes. 2021. *Cruella Review*.<https://www.rottentomatoes.com/cruella> Accessed July, 14.2021 at 2.15 pm
- Selvi, R., T., and Baskaran,G. 2016. *Sigmund Freud's Psychoanalytic Theory of Id, Ego, and Superego: A Critical Study of Director Shankar's Movie, Anniyan*. *International Journal of Linguistics and Literature*, 4(5).
- Scott, O. A. 2021. *'Cruella' Review: A Disney Villain Gets a Backstory. It's Spotty*. *The New York Times*.<https://www.nytimes.com/2021/05/26/movies/cruella-review.html>
 Accessed July, 12. 2022 at 12.00 pm
- The Free Eyclopedia. 2007. Personality.<http://www.EncyclopediaBritannica/ThePersonality>
 Accessed July, 12. 2022 at 3.00 pm
- The Free Eyclopedia.2021. *Cruella*.[https://en.m.wikipedia.org/wiki/Cruella_\(film\)](https://en.m.wikipedia.org/wiki/Cruella_(film))
 Accessed April, 7. 2022 at 11.00 am
- The Internet Movie Database. 2021. *Award for Cruella*.
https://m.imdb.com/title/tt3228774/awards/?ref=tt_awd Accessed July, 15. 2022 at 11.00 am
- The Internet Movie Database. 2021. *Craig Gillespie*.
https://m.imdb.com/name/nm0318916/?ref=tt_ov_dr Accessed July, 15. 2022 at 4.00 pm
- Toksoz, I. (2018). *Psychoanalytic Analysis of the Characters in Beckett's "Waiting for Godot"*. *International Journal of Science and Research (IJSR)*. 6 (12).
- Vishal, K.R. (2024). *Unscrambling the Friendship Code: A Psychoanalytic Exploration of the Bollywood Film: "Dor"*. *The International Journal of Indian Psychology* (volume 12, issue 2).
- Wismahardiani, N.R., Widiyanto, M.W. (2022). *Moral Values in Cruella Movie*. 2nd English Teaching, Literature, and Linguistics (ETERNAL) Conference.