

# **LOVE OF THE MAIN CHARACTER IN BOHEMIAN RHAPSODY MOVIE (2018): A PSYCHOANALYTIC APPROACH**

**Sugeng Rianto, Dewi Candraningrum**

**Program studi Pendidikan Bahas Inggris, Fakultas Keguruan dan Ilmu  
Pendidikan, Universitas Muhammadiyah Surakarta**

## **Abstrak**

Sastra merupakan kumpulan bahasa yang ditampilkan dalam sebuah karya seni, realitas kehidupan ini dilihat dari perbedaan status sosial, jenis kelamin, profesi, bangsa, dan lain-lain yang semuanya berbeda-beda. Film adalah rekaman gambar bergerak yang menceritakan sebuah cerita dan ditonton orang di layar. Bagaimana Kepribadian Freddie Dijelaskan Melalui Film Bagaimana Kebahagiaan Cinta Ditunjukkan Melalui Tokoh Utama Freddie Mercury Cinta Seperti Apa Yang Ditunjukkan Freddie Mercury Identifikasi Kepribadian Freddie Mercury Dalam Film Bohemian Rhapsody Temukan Kebahagiaan Cinta Pemeran Utama Freddie Merkuri dan mencari tahu bagaimana film ini dapat menjelaskannya Penulis menganalisis data yang telah dikumpulkan untuk memperoleh hasil tertentu sesuai dengan rumusan masalah melalui langkah-langkah sebagai berikut: 1. Peneliti mengumpulkan data dari film yang telah ditonton berulang kali dengan cermat dan secara menyeluruh. 2. Penulis kemudian menganalisis datanya. 3. Penulis kemudian menyimpulkan data yang telah diolah. Peneliti menemukan bahwa tidak semua jenis cinta merupakan gabungan dari beberapa komponen cinta yang dialami Freddie. Jenis cinta yang tidak dialami Freddie adalah Fatuous love yang muncul dari perpaduan antara passion dan keputusan/komitmen tanpa ada komponen keintiman. Bisa dikatakan cinta jenis ini bisa terjadi dengan cepat berdasarkan nafsu. Pertama, kepribadian Freddie, seperti kebanyakan orang, didorong oleh keinginan bawah sadar untuk mendapatkan kepuasan segera. Kedua, cinta terdiri dari tiga komponen: keintiman, gairah, dan keputusan/komitmen. Ketiga, komponen cinta adalah keintiman, gairah, dan komitmen. Elemen-elemen ini berinteraksi dan dapat bervariasi nilai dan nilainya seiring berjalannya waktu.

**Kata Kunci : psikoanalisis, teori cinta, jenis cinta**

## **Abstract**

Literature is a collection of languages displayed in a work of art, the reality of this life is seen from different social statuses, gender, profession, nation, and others which are all different. Movie is a recording of moving images that tells a story and that people watch on a screen. How Freddie's personality is explained through movies How is the happiness of love shown through the main character Freddie Mercury What kind of love is shown by Freddie Mercury identify the personality of Freddie Mercury in Bohemian Rhapsody Movie find out the happiness of love for the main character Freddie Mercury and find out how this film can explain it The writer analyzes the data that have been collected to obtain specific results in accordance with the formulation of the problem through the following steps: 1. Researchers collect data from movies that have been watched repeatedly carefully and thoroughly. 2. The writer then analyzes the data. 3. The author then concludes the data that has been processed. Researchers found that not all types of love were a combination of several love components experienced by Freddie. The type of love that Freddie does not experience is Fatuous love which arises from a combination of

passion and decision/commitment without any intimacy component. It can be said that this type of love can occur quickly based on passion. First, Freddie's personality is like most people, driven by a subconscious desire for immediate gratification. Second, love consists of three components: intimacy, passion, and decision/commitment. Third, the components of love are intimacy, passion, and commitment. These elements interact and can vary in value and worth over time.

**Keywords : psychoanalysis, love theory, kind of love**

## 1. INTRODUCTION

Literature is a collection of languages displayed in a work of art, the reality of this life is seen from different social statuses, gender, profession, nation, and others which are all different. The language of literature is not a language of dialogue that is simple and easy to understand, in this case, ancient literature uses standard rules and rigid patterns. According to Mural Esten (1978), Literature is an expression of artistic and imaginative events as an embodiment or expression of human and social life. In literary works, performances generally use language and have a positive impact on people's lives. Faruk argues that the concept of literature was initially very broad, covering all types of results of language or writing activities (Syahfitri, 2019). With the expansion of reading and writing habits, this understanding narrows and can be interpreted as all the results of imaginative linguistic activity both in the life described in it and in the language used to describe that life.

Love is the most important and complex side of human emotion. Behind his greatness and imaginative power over our lives. Love has two sides, the creative and the destructive, the beautiful and the terrifying, the black and white. The 19<sup>th</sup>-century German philosopher Arthur Schopenhauer stated that love guarantees, that we produce and that love is an emotion that cannot be separated from sex. Social scientists remain skeptical about the power of love in human affairs (Trawick, 2023). These emotions guide us to find someone who is right for our personality. However, however subtle, its essence remains as an individualization of the sexual impulse.

Freud was the first to propose a theory of coherent love based on scientific principles. He concluded that we fall in love because we follow established rules in nature our subconscious. Psychoanalysis is a branch of psychology that began around the 1900s by Sigmund Freud. The theory is related to human mental function and development. This is a branch of psychology that has contributed a lot to human psychology over the years (Fazalani, 2021). Psychoanalysis tries to show that these rules stem from our growing up, and more specifically from the sensual affection we receive from people who love us or people who don't

love us even though we really want them to. There is some recent research on love as a complex series of chemical reactions showing little progress. The results of this study indicate that love is chemically different from sexual desire which exceeds the capabilities of the latest scientific laboratories. Everything has hinted that the two states of mind do not equate with a crucial difference.

According to Rakhmahappin & Prabowo (2014) in essence, humans are social beings in which humans will build a structure or system of society, in which standards of values and norms will be created that become the standard of living of its citizens. Social norms in society can help prevent conflict or conflict between individuals. Social norms refer to what behavior can be accepted by society and what does not deserve social sanctions. Along with the changing times and the influence of a Western culture that entered Indonesia, it caused many deviations and damage to social norms. One of them is LGBT people.

Deviant sexual behavior is known as LGBT (Lesbian, Gay, Bisexual, Transgender). In Indonesia alone the number of gays has reached millions, based on estimates from the Ministry of Health in 2012 there were 1,095,970 gays who were visible, more than 5% (66,180) who suffered HIV. Meanwhile, UN agencies predict that the number of LGBT people will be much higher, namely 3 million in 2011. In fact, in 2009 the gay population was only around 800 thousand people. In this study, the writer is interested in examining the love felt by the main character, Freddie Mercury in the film *Bohemian Rhapsody*.

The love is reflected in one of the movies, directed by Bryan Singer, *Bohemian Rhapsody*. *Bohemian Rhapsody* is a 2018 biographical film about the legendary British rock band Queen. The film tells about the life of the main character, Freddie Mercury. Set in 1970s England, Farrokh Bulsara is an Indian Parsi student and baggage handler at Heathrow Airport. Watching Smile, a band he has been following for a long time performing at a nightclub. Farrokh then met Smile guitarist Brian May and drummer Roger Taylor, then offered to replace Smile vocalist Tim Staffel who left the band. At first, they were hesitant to receive Farrokh, especially with his big teeth, but that doesn't stop him. Farrokh started singing and showing what he could do. After much deliberation, Brian and Roger finally agreed to recruit Farrokh as Tim's replacement lead singer.

With extra bass John Deacon, Farrokh then formed a band with Roger Taylor and Brian May who gave the queen's name. Along with the many appearances on stage, Farrokh decided to change his name, to Freddie Mercury. Freddie and his new friends held a concert in England in a van and sold it to finance the recording of their first album. At one point, their demo was heard by John Reid, who had worked with Elton John and offered the opportunity to meet and

manage Queen. In 1975, Queen embarked on an American tour with Jim Beach as an attorney. Queen Together with Reid and Beach, then met with record producer Emi Records, Ray Foster to make their next album. Freddie suggested calling the next album “A Night at the Opera”. After that, Freddie began to captivate the world with his hit songs. The music and lyrics that he makes are somewhat strange, in fact, they are called masterpieces. One of the best phenomenal songs, namely Bohemian Rhapsody, was born from Freddie's crazy ideas, but Freddie's wild ideas actually brought destruction to his life, starting from fighting with himself, arguing with many people, and his love problems with Mary Austin. Bohemian Rhapsody tells the story of Queen's career until they were able to appear together at Live Aid in 1985. This appearance was six years before Freddie Mercury finally died because he was diagnosed with AIDS.

By watching the film carefully, the purpose of this study is to describe the happiness of the main character's love. The reasons for the above research can be explained using psychoanalytic personality theory through the ideas of Sigmund Freud. According to Freud, the personality structure consists of the id, ego, and superego. (Thornton & Argoff, 2009) says that psychoanalytic theory divides the soul into three functions: *The id*—the unconscious source of primitive sexual, addictive, and aggressive impulses; the *Superego*—unconscious intervention in societal customs, setting standards of living; And *Ego*—which represents self-esteem and mediates current realities and psychic needs and conflicts. The main elements of this theory are motivation, emotions, and other aspects of personality. Psychoanalytic theory is based on the assumption that personality begins to develop when conflict arises from the psychological aspect itself.

## **2. METHOD**

This type of research is descriptive qualitative research, that is the data collected is in the form of words, pictures, not numbers. In this study, the research subject were the film Bohemian Rhapsody, while the formal object is love of the main character's love. To collect data, the research watching Bohemian Rhapsody carefully and intensively. Furthermore, the researcher focuses on the main character's behavior when watching the film. Then the last step is the researcher begins to analyze the data that has been collected.

## **3. FINDING AND DISCUSSION**

This section include the observation and analyze of Bohemian Rhapsody movie. However it focus on the main character's behavior and the happiness of love of the main character when watching the film.

### 3.1 Finding

#### 3.1.1 How Freddie Mercury's Personality Is Reflected in the Bohemian Rhapsody Movie Based on Psychoanalytic Theory

The researchers use Freud Sigmund's personality theory. Researchers want to identify the personality of the main character in the film. Freud said that a person's personality is formed by the id, ego, and superego. The interactions and conflicts between these three components create personality.



Picture 1. Freddie tries to have sex

16:40-17:41, Freddie is a talented man. He looks very skilled at playing the piano, even when lying down he can play several notes well. Mary was amazed and praised Freddie's piano playing. Freddie felt confident that this arrangement had the potential to become a song that would be famous in the future. Then Freddie gave Mary a kiss and it was seen that he was trying to persuade Mary to have sexual relations but Mary refused the invitation because she had to rush to go to work.

Mary: I have to go to work

Freddie: I simply won't allow it

Mary: you're going to support me if I get fired?

Freddie: I'll always look after you

Mary: I'm going to be late.

Freddie seemed to really enjoy his time alone with Mary. He was very attracted to Mary's beauty and physical beauty. He was also amazed at Mary's beauty and said how beautiful Mary was.



Picture 2. Freddie refuses to kiss

35:50-36:18, Showing Freddie's expertise in playing the piano, he is also seen composing a song. The piece of lyrics he tried to play accompanied by piano is one of the best songs ever written. The song is entitled Love Of My Life, which Freddie dedicated to his sweetheart, Mary Austin. Freddie is one of the most songwriters for the band Queen. Freddie was happy and very serious as he composed word by word to include the lyrics to Love of My Life. He was accompanied by Paul when he was composing songs. Paul was his guide while Queen completed their latest album. Paul also gave credit to Freddie for a song he was working on.

Paul: Hmm. It's beautiful. What's it called?

Freddie: Love of My Life. I wrote it for Mary.

Paul: If you say so.

Paul seemed unhappy with Freddie's statement that he wrote the song for Mary. Then Paul tried to kiss Freddie on the lips, but Freddie didn't like what Paul was doing. Freddie also said that Mary knew him very well and Freddie tried not to betray the trust given to her by Mary.



Picture 3. Freddie made a confession

53:20-54:30, Freddie was sitting alone with Mary watching replays of the concert. Here Freddie looks like he wants to say something to Mary. Then Mary realized this, she asked Freddie to tell the truth. At first Freddie seemed unable to say everything to Mary, he was afraid that his words would hurt Mary's feelings. But finally Freddie told everything and admitted that he was bisexual. Mary also looked sad when she heard this statement.

Mary: Freddie, what's wrong? Something's been wrong for a while now. Say it.

Freddie: I've been thinking about it a lot. I think I'm bisexual.

Mary: Freddie, you're gay.

Freddie is going through a difficult time where he admits that he is bisexual but on the one hand he also really loves Mary and doesn't want a relationship end with Mary.

Like most people, Freddie has a subconscious need for instant pleasure, which drives his behavior. Freddie's ego performance is an expression of his ego, which is thought to be the most healthy aspect of the self and serves as a mediator between the Id and the Superego. Freddie feels nervous and guilty about coming out to Mary as bisexual since he violated his Superego by being unable to control himself. Early encounters give rise to the ego and superego. The id seeks rapid fulfillment, while the superego instructs us on how to behave in a way that is acceptable to society. The demands of the id and superego must be balanced by a strong ego, or neurosis, anxiety disorders, or undesirable conduct may result.

### 3.1.2 How is happiness of love shown in the Bohemian Rhapsody Movie

The purpose of this research is to determine the components of Freddie's love. After watching the film and conducting analysis, researchers found several components shown by Freddie.

#### a. Intimacy

Couples prioritize each other's happiness over the opposite sex in a romantic relationship. This is because intimacy also includes feelings that indicate closeness, attachment and emotional ties to each other.



Picture 4. Freddie meets Mary at Biba

From picture 1, scene at 9:55-10:14, When Freddie found out where Mary worked, he immediately visited the place. It seems that Freddie immediately liked Mary from the first time they met and immediately started looking for her whereabouts by visiting the place where Mary works. Sure enough, Freddie also found Mary who was serving customers and while looking at Freddie's clothes he was also paying attention to Mary. From a distance, Mary already knew that Freddie had come to meet her and Mary immediately approached Freddie who was pretending to look at the clothes in the window.

Mary: So, You found me, then how can I help you?

Freddie: Oh um, I rather liked these. Do you think you have them in my size?

Mary: So is the ladies section, so I'm not exactly sure.

Freddie: There wasn't a sign or anything.

Mary: I don't think it should really matter, do you?

Freddie felt like he wanted to always be close to Mary, it was proven that when he was with her, Freddie felt happy and happy. Freddie felt understood and supported in his desires when he was with Mary, he also felt appreciated when he was around Mary.



Picture 5. Freddie is telling Mary

24:20-26:02, Freddie is seen talking to Mary. Mary then asked Freddie how he felt singing for everyone watching. Freddie gently answered the question that when he knew that everyone was listening and Freddie had captivated them all then he said that it was as if he couldn't sing out of tune. Freddie felt that it was destined for him. He didn't feel afraid of anything when he went through everything with Mary. Then Freddie stood up and took something to show Mary and said:



Freddie: Don't move, Don't move. You're the love of my love.

Mary: Freddie. Which finger do I put this on?

Freddie: Wedding finger. Will you marry me?

Mary: Yes!

With the ring as a sign of Freddie's request, this proves that Freddie wants to propose to Mary and take their relationship to a more serious level. Mary also felt like she wanted to be completely owned by Freddie and she said yes to Freddie's invitation.



Picture 6. Freddie is informing Mary

28:46-29:37, Queen began to be known by many people and in the eyes of the world. Young people are loving the songs created by them. This is proven by the many tours they have undertaken, one of which is to big cities in America and other parts of the world. Freddie, who really loves Mary, never forgets to share news about himself. It can be seen that he often contacts Mary while he is on tour.

Mary: I'm good, I just miss you.

Freddie: What are you doing? You can't possibly be having any fun without me.

Mary: Nothing as exciting as America.

Say hi to the boys for me.

Freddie: I will, love you.

Mary: By, Freddie. I love you.

Freddie always calls Mary to give her news, this can be interpreted as if he always wants intense intimate communication with Mary. However, in scenes 28:57-29:30, Freddie is seen passing

an unknown man and he seems interested in this man. With this incident, it seems that Freddie also likes men or is also known as gay.

b. Passion

The motivational element is filled with desire which refers to romantic relationships as well as physical attraction which causes a person to want to be close to a partner and enjoy, feel physical touch, or have sexual relations with a partner in a romantic relationship.



Picture 7. Freddie and Mary are making out

16:40-17:41, Freddie is a talented man. He looks very skilled at playing the piano, even when lying down he can play several notes well. Mary was amazed and praised Freddie's piano playing. Freddie felt confident that this arrangement had the potential to become a song that would be famous in the future. Then Freddie gave Mary a kiss and it was seen that he was trying to persuade Mary to have sexual relations but Mary refused the invitation because she had to rush to go to work.

Mary: I have to go to work

Freddie: I simply won't allow it

Mary: you're going to support me if I get fired?

Freddie: I'll always look after you

Mary: I'm going to be late.

Freddie seemed to really enjoy his time alone with Mary. He was very attracted to Mary's beauty and physical beauty. He was also amazed at Mary's beauty and said how beautiful Mary was.



Picture 8. Freddie made a song for Mary

35:50-36:18, Showing Freddie's expertise in playing the piano, he is also seen composing a song. The piece of lyrics he tried to play accompanied by piano is one of the best songs ever written. The song is entitled Love Of My Life, which Freddie dedicated to his sweetheart, Mary Austin. Freddie is one of the most songwriters for the band Queen. Freddie was happy and very serious as he composed word by word to include the lyrics to Love of My Life. He was accompanied by Paul when he was composing songs. Paul was his guide while Queen completed their latest album. Paul also gave credit to Freddie for a song he was working on.

Paul: Hmm. It's beautiful. What's it called?

Freddie: Love of My Life. I wrote it for Mary.

Paul: If you say so.

Paul seemed unhappy with Freddie's statement that he wrote the song for Mary. Then Paul tried to kiss Freddie on the lips, but Freddie didn't like what Paul was doing. Freddie also said that Mary knew him very well and Freddie tried not to betray the trust given to her by Mary.

### c. Commitment

This component is also referred to as decision because it refers to the decision to love and decide to stay with one's life partner forever. These feelings, like intimacy, appear not only in romantic partners but also in family and relative relationships. This is the most important aspect of love. The feeling of wanting to maintain each other even though there are ups and downs in the course of a relationship is an indication of commitment.



Picture 9. Freddie is arguing with Mary

54:50-56:40, Freddie and Mary are watching a replay of when Freddie held a music concert with Queen which was attended by thousands of people. Based on what guitarist Bryan said, the concert was the biggest in music history. Freddie then told Mary about his experience that night. Freddie said that night that everyone knew what he was going to sing. Then everyone sang the song Love of My Life solemnly. Freddie told Mary that everyone that night was singing to him. However, Mary felt bad when Freddie finished telling all that and she immediately asked Freddie.

Mary: Freddie, what's wrong? Something's been wrong for a while now. Say it.

Freddie: I've been thinking about it a lot. I think I'm bisexual.

Mary: Freddie, you're gay.

After hearing Freddie's confession where he admitted that he was bisexual. This made Mary's face turn sad and the atmosphere suddenly became silent. Mary felt very sad and devastated at that moment. Until she thought about taking off her engagement ring with Freddie. But Freddie quickly stopped Mary from taking off their engagement ring. Freddie said:

Freddie: No. don't take it off. You promised me, You'd never take it off.

Mary: What do you want from me?

Freddie: Almost everything. I want you in my life.

Mary: Why?

Freddie: We believe in each other. and that's everything. For us.

Mary: Your live is going to be very difficult.

So great was Freddie's love for Mary that he dared to tell Mary honestly about everything. He also tries to defend his relationship with Mary, even though Mary is in a dilemma with the statement that Freddie made.



Picture 10. Freddie introduce Jim to his family

1:50:50-1:51:25, Freddie offers Jim to drink tea and visit his family. Freddie wants to introduce Jim to his family, at first they seem confused by Freddie because he no longer has Mary with him. It seems that they already know that Freddie likes people of the same sex, Freddie is full of confidence that he feels confident in his choice. They talked about how Jim knew Freddie, Jim was a former waiter who once worked for Freddie.

In a short time, Freddie quickly said goodbye because he had to attend a charity concert. Queen is one of the bands that will perform at the charity concert.

Kash: So, Jim. How do you know Freddie?

Freddie's father: Do you work together?

Freddie: Jim is my friend.

Freddie's father and mother understand what happened to Freddie. They don't mind what Freddie has chosen. Until the end of his life, Freddie ended up living alone with Jim as his life partner.

Three things make up love: closeness, ardor, and choice or dedication. A relationship's emotional investment, or intimacy, is hard to attain and develops gradually. Passion encompasses not only physical attraction but also the yearning for romance, alluring looks, and flawless sexual performance. A decision to love someone is a short-term commitment, and maintaining that love is a long-term commitment. In addition to the closeness and connection that come with being emotionally invested in a relationship, Freddie Mercury possessed the

other three elements of love. Passion is more than just physical attraction; it also includes the need to be taken care of by your significant other and to think about them constantly. Freddie Mercury showed his commitment and desire to stay with his spouse even though he was bisexual and had other relationships.

### 3.1.3 What kind of love is shown in the Bohemian Rhapsody Movie

#### a. Liking

Intimacy is only represented by liking. This becomes the basis for a close friendship, unnoticed by passion and commitment. This can be seen in friendships that lack passion. Even when love appears, one of the parties will lose it soon.



Picture 11. Freddie's first encounter with Brian and Roger

8:00-9:15, After watching Smile's performance, Freddie looked for their whereabouts. Freddie finally met Brian and Roger, who had just been left by the vocalist. Then Freddie invited Brian and Roger to get to know each other. After learning that the vocalist had left the band, Freddie tried to offer to replace the vocalist. Initially, Brian and Roger felt unsure and laughed at Freddie because he had an unattractive appearance, plus Freddie had uneven teeth. Freddie immediately responded to Roger's taunts by singing a song in front of them. Freddie was able to amaze Bryan and Roger with his good voice, he also offered a song that he wrote himself.

Roger: Well, you're five minutes too late.

Brian: our lead singer just quit.

Freddie: well, then you'll need someone new.

Brian: any ideas?

Freddie: what about me.

Roger: uh, not with those teeth, mate.

That was the beginning of their introduction and a new band would be formed which would later be known by many people. Freddie has also officially replaced Smile's vocalist and there will be additional personnel filling in on bass guitar.



Picture 12. Freddie who introduced Jim to Mary

1:53:07-1:53:32, Queen band members were seen gathering and waiting their turn to perform in a van. Then Mary came over to say hello to Freddie and the others. Knowing this, Freddie looked happy and approached Mary and gave her a kiss on the cheek. Freddie seems to have let go of Mary with her new boyfriend and introduces Jim as his partner. Here, Freddie still calls Mary darling, but this does not indicate that he considers Mary his partner but only considers her a good friend. Then Freddie asked Jim to join Mary to wait behind the stage.

Freddie: hello, my love.

Mary: hi.

Freddie: Mary. David... this is Jim. Jim... Mary and David.

It can be seen that Freddie has let Mary go with his new girlfriend. Freddie now only considers Mary as a close friend, not as his idol anymore.

#### b. Infatuation

Love at first sight. first love. This love idealizes its object. In this love, a person rarely sees his partner as a genuine person, which can sometimes be wrong. Unexpected passion, emotional desire, and intense physical contact are signs of love. This love is a little obsessive.



Picture 13. Freddie's first meeting with Mary

7:05-7:45, The scene begins with Freddie entering a building where there are students who have just finished watching a musical performance. Then Freddie started walking down the corridor until he saw a beautiful woman who was chatting with a friend. The woman's name was Mary Austyn. This was the first time Freddie met Mary. He looked at Mary for quite a long time as she walked down the aisle with a look in her eyes as if she was falling in love with someone at first sight. Then Mary realized that Freddie was watching her and started asking:

Mary: You all right?

Freddie: Sorry. Oh, I was just looking for the band.

Mary: They're usually out back

Freddie was enchanted by Mary's beauty and felt like he fell in love at first sight. This can be seen from the gaze he looks at Mary. At that time, Freddie began to like a beautiful girl with blonde hair named Mary Austin. He also turned around and said that he liked the coat Mary was wearing.

c. Empty love

a type of love that comes from the decision to love someone and the commitment to love them continuously even though there is no intimacy or passion. Empty love is love that has existed for several years, but no longer has any physical or emotional attraction.





Picture 14. Freddie invites Mary for a drink

59:07-59:40, After being in a long relationship with Mary, Freddie's feelings for her never changed. Freddie will always love Mary even though he can't live with her now. But Freddie still wanted to feel close to Mary, so he had a house opposite Mary. Then, when he felt lonely, Freddie came to contact Mary and invited her to have fun. This time Freddie asked Mary to drink, but Mary felt something different about what he was doing. At first Mary refused Freddie's invitation, but Freddie slightly forced Mary to drink with him.

Freddie: Do you have something to drink?

Mary: I suppose.

Freddie: Go get it. Pour yourself something. Pour yourself a drink darling. Do you have it?

Mary: yes.

Freddie: Cheers.

Mary: Cheers.

Freddie decided to still love Mary and will continue to love Mary even though they are no longer together. This is different from Mary, who feels like she has lost Freddie's affection and love.

d. Romantic love

a combination of intimacy and passion. Romantic love is stronger than liking because of physical or emotional attraction, so men and women are physically and emotionally attracted to each other.



Picture 15. Freddie is interested in Jim

1:03:30-1:04:12, Freddie is a person who likes to throw parties so he doesn't feel lonely, Freddie is also an alcoholic. After the party was over, the servants were seen cleaning everything up. One of the servants was tidying up things near Freddie and Freddie tried to seduce the servant. However, the waiter was not happy with Freddie's treatment. The waiter felt uncomfortable and showed his anger towards Freddie. Freddie felt guilty when he found out that the waiter didn't like his actions. Then he apologized to the waiter and invited him to drink together. The waiter agreed to Freddie's invitation and then the two of them drank together. Freddie also said that the waiter had a handsome face, Freddie also said that he liked men with neat uniforms.

Freddie: let me get you a beer.

Waiter: I wouldn't mind a beer.

Freddie: can you just tell me where we keep them? You're very handsome. I love a man in uniform.

Waiter: so do I

Then they spent the evening talking and drinking beer. Freddie looks interested in the waiter. The servant was named Jim Hutton, who would later become Freddie's life partner.



Picture 16. Freddie have conversation with Jim.

1:04:17-1:05:42, Freddie is seen talking to Jim and telling him his life story. Freddie said that he doesn't have many friends. Freddie told Jim all his sorrows, it seemed that Jim felt what Freddie felt. Then Jim tried to give Freddie a suggestion. Jim seems interested in Freddie. After that, this can be seen from the way he looks into Freddie's eyes. Then they kissed and Freddie seemed to like it. Jim was also seen giving Freddie a short message after they kissed.

Freddie: I like you

Jim: I like you too, Freddie. Come and find me when you decide you like yourself.

Freddie: can I have your name at least?

Jim: it's Jim Hutton.

Freddie: good night, Jim.

Jim: good night, Freddie. Or should I say good morning?

Jim is seen giving a short message to Freddie, if Freddie has decided everything then come to see him.

e. Consummate love

Formed when closeness, passion, and commitment come together to form a distinct group. Many people experience this love, but it is difficult to maintain it. This is due to a person's ability to strengthen these three elements of love.



Picture 17. Freddie made a confession

53:20-54:30, Freddie was sitting alone with Mary watching replays of the concert. Here Freddie looks like he wants to say something to Mary. Then Mary realized this, she asked Freddie to tell the truth. At first Freddie seemed unable to say everything to Mary, he was afraid that his words would hurt Mary's feelings. But finally Freddie told everything and admitted that he was bisexual. Mary also looked sad when she heard this statement.

Mary: Freddie, what's wrong? Something's been wrong for a while now. Say it.

Freddie: I've been thinking about it a lot. I think I'm bisexual.

Mary: Freddie, you're gay.

Freddie is going through a difficult time where he admits that he is bisexual but on the one hand he also really loves Mary and doesn't want a relationship end with Mary.

f. None love

None love is a type of relationship that may occur to most people in the form of interactions without feelings of love or liking because it does not have elements of intimacy, passion and commitment.



Picture 18. Freddie is getting ready to go out

4:30-5:11, It shows Freddie getting ready to go out even though his mother has already prepared food for dinner, however, Freddie's mother doesn't feel sad, instead, the mother asks Freddie if he is going out with his girlfriend and gives Freddie a loving kiss. Before leaving the house, Freddie had time to meet his father, but it seemed that Freddie and his father had a less than harmonious relationship. This is clearly seen when Freddie meets his father and from the way Freddie communicates with his father.

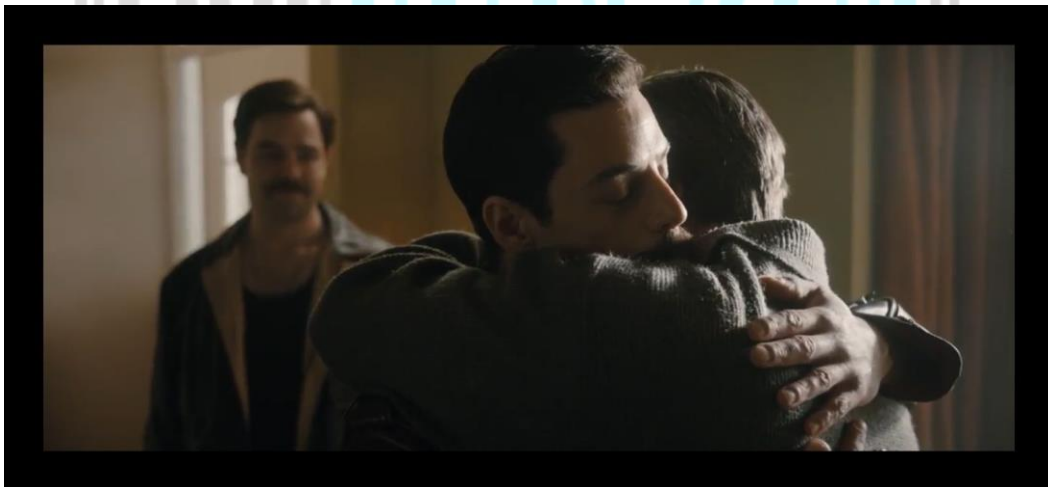
Freddie's father: out again, Farrokh?

Freddie: it's Freddie now, papa.

Freddie's father: Freddie or Farrokh...what difference does it make when you're out every night...no thought of the future in your head? Good thoughts, good words, good deeds. That's what you should aspire to.

Freddie: yes. And how's that worked out for you?

Freddie's father tried to give advice but Freddie ignored this, who immediately left his father. It seems that Freddie's father doesn't like seeing Freddie go out of the house every night and never think about his future. Freddie immediately denied his father's words by saying what the results would be for his father.



Picture 19. Freddie visited his family.

1:51:52-1:52:26, Freddie was visiting his family and told them he would be attending a charity concert, namely Live Aid. Freddie said that the concert was held to raise funds which would later be donated to hungry children in Africa. Then his father approached Freddie and gave him a warm hug. Freddie didn't forget what his father had said. With pride, his father hugged Freddie tightly. Freddie's family is happy with what Freddie has done.

Freddie: good thoughts, good words, good deeds. Just like you taught me, papa.

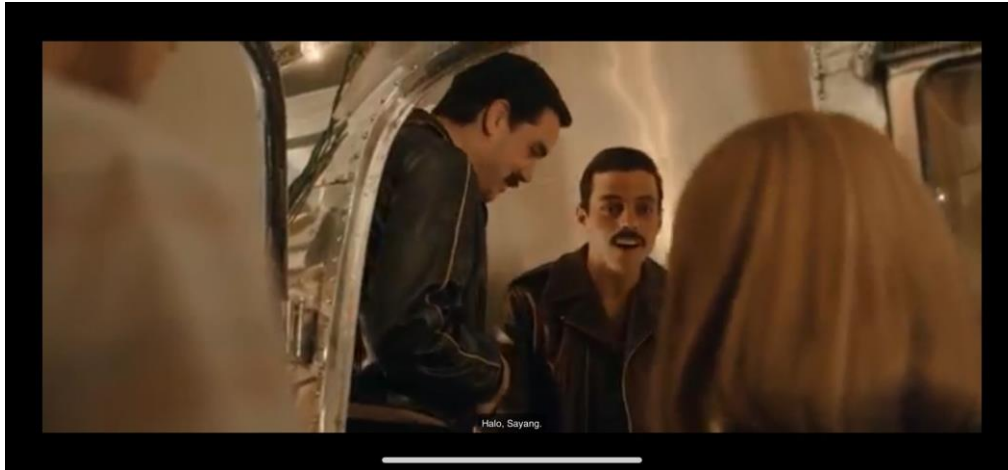
Freddie's mother: Love you, Beta.

Freddie: Bye Kash. Love you too, mama.

Freddie's father and mother feel proud of what Freddie has done so far. Freddie also never forgot what his father said.

g. Companionate love

An example of this relationship is a friendship relationship where both of them only look after each other for a long time. This type of love only has components of closeness and commitment without any passion.



Picture 20. Mary visited Freddie before the concert

1:53:099-1:53:24, Mary comes over to say hello to Freddie and the others. Knowing this, Freddie looked happy and approached Mary and gave her a kiss on the cheek. Freddie seems to have let go of Mary with her new boyfriend and introduces Jim as his partner. Here, Freddie still calls Mary darling, but this does not indicate that he considers Mary his partner but only considers her a good friend. Then Freddie asked Jim to join Mary to wait behind the stage.

Freddie: hello, my love.

Mary: hi.

Freddie: Mary. David... this is Jim. Jim... Mary and David.

It can be seen that Freddie has let Mary go with his new girlfriend. Freddie now only considers Mary as a close friend, not as his idol anymore. However, their relationship continues to work well as friends.

The three elements of love are commitment, desire, and intimacy. These components interact and can change in importance over time. People fall in love with one another based on these three elements being experienced and demonstrated. Eight distinct forms of love can be created by combining any one of these components. Intimacy, passion, and commitment are the three components of consummate love, which differs from other types of love such as none, like, infatuation, hollow love, romantic love, companionate, and fatuous love. But not every

romantic experience Freddie has stems from a mix of these elements. For instance, foolish love results from a decision or commitment combined with passion but lacks connection. Based on lust, this kind of love can happen fast.

### **3.2 Discussion**

Based on the results of data analysis, Researchers found that Freddie had a personality like most people. Freddie wanting sexual relations when he was with Mary was a subconscious motive and desire that encompassed his instincts and drove his actions. It's the part of us that wants immediate satisfaction. Then Freddie was able to restrain his sexual desires in the part where he was composing a song for Mary accompanied by Paul. then Paul tried to kiss Freddie's lips but he immediately rejected Paul's action, this was a performance of Freddie's ego. Freddie's ego can limit what can be done and often we have to wait until our needs are met. Freud said that the ego operates based on the reality principle or the recognition that sometimes satisfaction must be postponed for practical reasons. It acts as a mediator between the Id and Superego and is seen as the healthiest part of the self (Pelz & Overstreet, 2022). After Freddie admitted to Mary that he was bisexual, he felt guilty about what he was experiencing. He feels guilty and anxious because he has violated the Superego over circumstances he cannot control. Our conscience functions as a superego, which functions as a moral compass that tells us how we should behave. Our minds strive for perfection and judge our behavior, which causes feelings of pride or, if we fail to achieve our ideal, feelings of guilt (Spielman et al., 2021).

Although the id is present from birth, the ego and superego grow during our early interactions with other people. Because the id desires instant gratification whatever the consequences, the id and superego are always in conflict. However, the superego tells us that we should behave in a way that is acceptable to society. So, finding a middle ground is the ego's job. This will not lead us to feelings of guilt and helps satisfy the desire for identity in a rational way. According to Freud, someone who has a strong ego has a healthy personality because they can balance the demands of the id and superego. He stated that system imbalances can lead to neurosis, anxiety disorders, or unhealthy behavior (Taylor et al., 2022).

After analyzing the data that the researcher had obtained from the film entitled *Bohemian Rhapsody*, the researcher found several points that could be used for discussion. This research aims to determine the form of love of the main character in this film, namely Freddie Mercury, who is bisexual. In this study, researchers used Sternberg's (1986) love triangle theory which has three components, namely Intimacy, Passion, and Commitment.

Researchers used the love triangle theory by Robert Sternberg to find out the form of love that Freddie Mercury experienced during his life. Based on the theory, Love consists of three parts:

the first is intimacy, which includes the feelings of closeness, bonding, and attachment that a person experiences in a love relationship; second is passion, which includes desires that drive romance, physical attraction, and sexual perfection; and third is decision/commitment, which includes, in the short term, the decision to love another person, and in the long term, the commitment to maintain that love (Sternberg, 1986).

In these findings, researchers found that Freddie Mercury had all the components of love. Freddie always feels like he wants to be close to Mary and make her happy, this is a characteristic of intimacy which shows an emotional aspect and also refers to feelings of closeness and connection. Intimacy, which can be seen as an emotional investment in a relationship, can be considered the foundation of love that develops gradually and is very difficult to achieve. However, it is relatively stable over the course of the relationship, at least until partners are no longer emotionally close to each other or until both feel satisfied with their relationship (Anderson, 2016). Based on the data obtained, Freddie was seen having sexual relations with Mary several times. Since he first met Mary, he immediately felt physically attracted to her, which caused Freddie to want to be close and enjoy her. However, passion is not only limited to the physical; it can also include a feeling of wanting to be cared for by a partner as well as always thinking about loved ones. Even though Freddie was bisexual and changed partners several times, researchers found several parts in the film that showed that Freddie was committed. Sternberg said that commitment includes “the cognitive elements involved in making decisions about the existence and potential of long-term commitment in a love relationship” and “Most closely related, expresses a person's commitment and desire to maintain a particular love relationship (Sternberg, 1986).

The three components of love interact with each other. While all three components are important in a loving relationship, their value may vary from one relationship to the next or during different time periods in a relationship. Different types of love can emerge from situations where the combination of different elements is limited (Sternberg, 2019:281). According to this theory, people love each other to the extent that they experience and demonstrate the three components described, and each combination of these three components will produce eight different types of love (Anderson, 2016).

The combination of the three elements of love produces eight possible types of love. No relationship in the real world is likely to be a pure example of any one of its components. The type of love they have can produce different combinations, making it more obvious. When one of the three elements of love is absent, it is called non-love. A feeling of fondness arises when someone only experiences intimacy without passion and decision or commitment. Infatuation



occurs when a person experiences only lust without experiencing other aspects of love at the same time. Romantic love comes from a combination of intimacy and passion; friendship comes from a combination of intimacy and decision/commitment; and stupid love comes from a combination of intimacy and decisions/commitments without intimacy. Whole love, or perfect love, consists of three elements: intimacy, passion, and commitment.

Researchers found that not all types of love were a combination of several love components experienced by Freddie. The type of love that Freddie does not experience is Fatuous love which arises from a combination of passion and decision/commitment without any intimacy component. It can be said that this type of love can occur quickly based on passion.

## **4. CLOSING**

### **4.1 Conclusion**

Based on the explanation outlined above regarding the happiness of love and personality of Freddie Mercury, the author will state several crucial things that can be concluded.

First, Freddie's personality is like most people, driven by a subconscious desire for immediate gratification. Freddie's ego performance is the performance of his ego, which acts as a mediator between the Id and the Superego and is considered the healthiest part of the self. After admitting to Mary that he is bisexual, Freddie feels guilty and anxious, because he violated his Superego due to his incapacity to operate. The ego and superego grow during early interactions, and the id desires instant gratification, whereas the superego teaches us to behave in ways that are acceptable to society. A strong ego balances the demands of the id and superego, which can lead to neurosis, anxiety disorders, or unhealthy behavior.

Second, love consists of three components: intimacy, passion, and decision/commitment. Intimacy is an emotional investment in a relationship, which develops gradually and is difficult to achieve. Passion is not limited to physical attraction but also includes the desire for romance, physical attraction, and sexual perfection. Decision/commitment involves a short-term decision to love another person and a long-term commitment to maintain that love. Freddie Mercury had three components of love, including feelings of closeness and connection, which are emotionally embedded in a relationship. Passion is not limited to physical attraction but also includes the desire to be cared for by your partner and to always think about the person you love. Despite being bisexual and changing partners, Freddie Mercury remained committed, expressing his commitment and desire to maintain a particular love relationship.

Third, the components of love are intimacy, passion, and commitment. These elements interact and can vary in value and worth over time. People love each other based on the experience and

demonstration of these three components. Each combination of these elements produces eight different types of love. none love, liking, infatuation, empty love, romantic love, companionate, fatuous love, and consummate love which consists of three elements: intimacy, passion, and commitment. However, not all love experiences experienced by Freddie are from a combination of these components. Foolish love, for example, arises from a combination of passion and decision/commitment without any intimacy component. This type of love can happen quickly based on lust.

#### **4.2 Implication**

Based on the results of data analysis, Researchers found the personality of Freddie Mercury, the happiness of love for the main character Freddie Mercury and the happiness of love of the main character namely Freddie Mercury in Bohemian Rhapsody Movie. Researchers hope this research can be used as a source the data and a reference for other research sourced from Bohemian.

#### **REFERENCES**

- Anderson, J. W. (2016). Sternberg's Triangular Theory of Love. *Encyclopedia of family studies*, 1-3.
- Aron, A., & Tomlinson, J. M. (2019). Love as expansion of the self. In R. J. Sternberg & K. Sternberg (Eds.), *The new psychology of love* (2nd ed., pp. 1–24). New York, NY: Cambridge University Press.
- Ardiansyah, A., Sarinah, S., Susilawati, S., & Juanda, J. (2022). Kajian Psikoanalisis Sigmund Freud. *Jurnal Kependidikan*, 7(1), 25-31.
- Bertens, K. (2006). *Psikoanalisis Sigmund Freud*. Gramedia Pustaka Utama.
- Baird, A. (2019). *Psychodynamic Theory. Always Developing*.
- Daldiyono. (2013). *How To Be a Real and Successful STUDENT*. Jakarta: Gramedia Pustaka Utama.
- Fazalani, R. (2021). Menganalisis Novel “Cantik Itu Luka” Karya Eka Kurniawan Melalui Unsur Intrinsik Dan Menggunakan Psikoanalisis. *Reform: Jurnal Pendidikan. Sosial dan Budaya*, 1(01), 11-23.
- Feybesse, C., & Hatfield, C. (2019). Passionate love. In R. J. Sternberg & K. Sternberg (Eds.), *The new psychology of love* (2nd ed., pp. 183–207). New York, NY: Cambridge University Press.
- Habsy, B. A., Mufidha, N., Shelomita, C., Rahayu, I., & Muckorobin, M. I. (2023). Filsafat Dasar dalam Konseling Psikoanalisis: Studi Literatur. *Indonesian Journal of Educational Counseling*, 7(2), 189-199.
- Mikulincer, M., & Shaver, P. R. (2019). A behavioral systems approach to romantic love relationships: Attachment, caregiving, and sex. In R. J. Sternberg & K. Sternberg (Eds.), *The new psychology of love* (2nd ed., pp. 259–279). New York, NY: Cambridge University Press.
- Nasrum, & Mutmainnah, N. (2019). *Deviant Life and Morality DEVIANT LIFE AND MORALITY IN BOHEMIAN RHAPSODY MOVIE (READERS' RESPONSE THEORY)* (Vol. 6).
- Pelz, B., & Overstreet, L. (2022). *Psychodynamic Theory. Developmental Psychology*.

- Peele, S., & Brodsky, A. (2015). *Love and addiction*. Watertown, MA: Broadrow Publications.
- Rakhmahappin, Y., & Prabowo, A. (2014). *KECEMASAN SOSIAL KAUM HOMOSEKSUAL GAY DAN LESBIAN* (Vol. 02, Issue 02).
- Spielman, R. M., Dumper, K., Jenkins, W., Lacombe, A., Lovett, M., & Perlmutter, M. (2021). Freud and the Psychodynamic Perspective. *Psychology-H5P Edition*.
- Sternberg, R. J. (1986). A triangular theory of love. *Psychological review*, 93(2), 119.
- Sternberg, R. J. (2019). When love goes awry (part I): Applications of the duplex theory of love and its development to relationships gone bad.
- Sternberg, R. J., Kaur, N., & Mistur, E. J. (2019). When love goes awry (part 2): Application of an augmented triangular theory of love to personal and situational factors in jealousy and envy. In R. J. Sternberg & K. Sternberg (Eds.), *The new psychology of love* (2nd ed., pp. 300–330). New York, NY: Cambridge University Press.
- Sternberg, R. J. (2021). Toward a triangular theory of love for one's musical instrument. *Psychology of Music*, 49(6), 1747-1757.
- Sulaiman, R. V. U., & Reswari, I. N. (2021). Homosexuality in Morten Tyldum's *The Imitation Game* Movie. *ASELS\_2021*. <https://doi.org/10.51773/asels2021.v1i1.28>
- Supriyanto, D. (2017). *Sucikan Cinta, Rengkuhlah Surga*. Jakarta: Elex Media Komputindo.
- Syahfitri, D. (2019). *TEORI SASTRA Pustaka Ilmu Yogyakarta Teori Sastra Konsep dan Metode View project Leksikografi Ejaan dan Peristilahan View project*. <https://www.researchgate.net/publication/353750201>
- Trawick, M. (2023). *Notes on love in a Tamil family*. Univ of California Press.
- Thornton, D., & Argoff, C. E. (2009). Psychological Constructs and Treatment Interventions. In *Pain Management Secrets, Third Edition* (pp. 328–341). Elsevier. <https://doi.org/10.1016/B978-0-323-04019-8.00043-3>
- Traylor, J., Overstreet, L., & Lang, D. (2022). Psychodynamic Theory: Freud. *Individual and Family Development, Health, and Well-being*.
- Winahyu, S. K. (2019). Author's inner Conflict in the Songs "Love of My Life" and "Bohemian Rhapsody." *International Journal of English Literature and Social Sciences*, 4(3), 805–812. <https://doi.org/10.22161/ijels.4.3.35>